



SPARE PARTS EXPLODED VIEW
GAS WALL BOILERS

Models

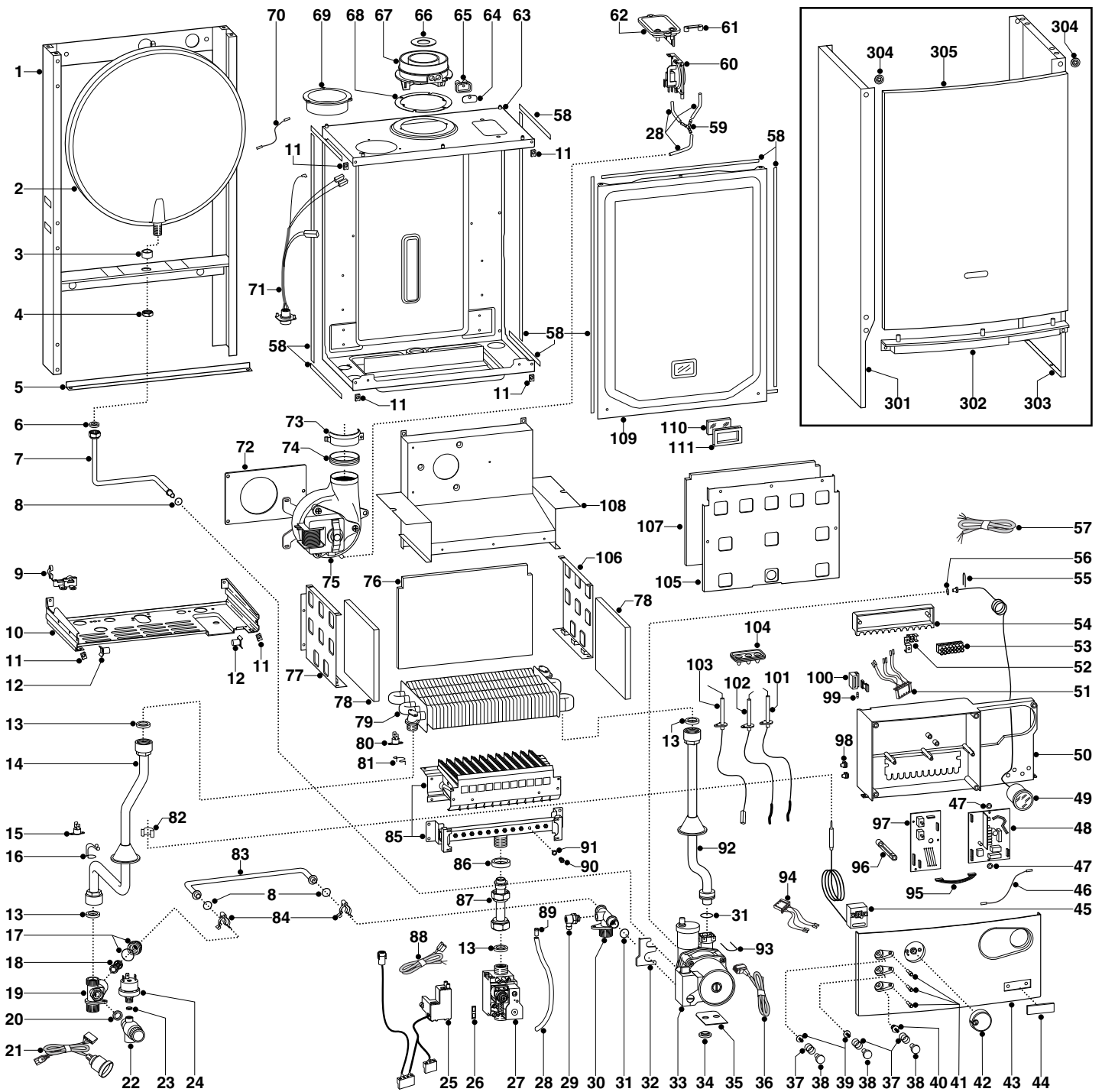
MICROSYSTEM 21 RFFI

MICROSYSTEM 28 RFFI

Edition 1 of 8 April 2003

Revision 1 of 17 December 2003





MODEL	CODE	SERIAL NO. VALIDITY	REF.
MICROSYSTEM 21 RFFI NG (AR)	537006	2320339000001	A
MICROSYSTEM 28 RFFI NG (AR)	537010	2320339000001	B
MICROSYSTEM 21 RFFI NG (RD)	537014	2320339000001	C
MICROSYSTEM 28 RFFI NG (RD)	537018	2320339000001	D
MICROSYSTEM 21 RFFI NG (SM)	537022	2320339000001	E
MICROSYSTEM 28 RFFI NG (SM)	537026	2320339000001	F

ER2003210034901011

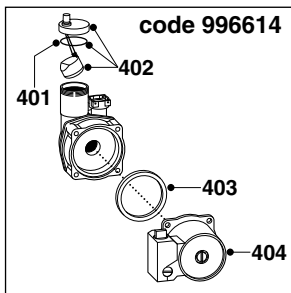
PART.	CODE	DESCRIPTION	REF.	NOTE
1	-----	Frame		11
2	998616	Expansion vessel		
3	998776	Bush (expansion vessel)		
4	998581	3/8" lock nut		
5	65100295	Frame support		21
6	573521	Gasket 3/8" (25 pcs)		
7	999525	Pipe (expansion vessel)		
8	998077	O-ring gasket (20 pcs)		
9	998580	Cable holder		
10	-----	Hydraulic group support		11
11	570717	Spring (fastening) (5 pcs)		
12	995492	Pivot		
13	573520	Gasket 3/4" (25 pcs)		
14	999530	Pipe (C.H. flow)		
15	570760	Thermostat (anti-frost)		
16	999557	Fixing spring (thermostat) (5 pcs)		
17	996045	Union by-pass + O-ring		
18	996046	By-pass		
19	996049	Flow group (twin pass)		
20	573528	Gasket 1/2" (25 pcs)		
21	995407	Cable (low water pressure switch)		
22	998447	Safety valve (1/4" 3 Bar)		
23	569390	Gasket 1/4" (25 pcs)		
24	995903	Low water pressure switch		
25	65100514	Spark generator		22
26	574279	Gasket (spark generator) (5 pcs)		
27	999475	Gas valve (SIT 843 SIGMA)		
28	573576	Compensation tube		
29	998809	Drain valve		
30	990708	Return group		
31	998424	O-ring (C=4 D=17,04) (10 pcs)		
32	999162	Pump bracket		
33	996614	Kit for rear pump attachment		23
34	999100	Lock washer (20 pcs)		
35	995364	Spacer plate (pump) (20 pcs)		
36	995906	Cable (pump)		
37	999603	Spring (push button)		
38	999469	Push button		
39	999442	Spindle (push button)		
40	999444	Reset button insert		
41	997714	L.E.D. (power indicator)		
42	999456	Control knob		
43	999459	Control panel (front)		
44	-----	Name badge		11
45	999577	Thermostat (regulation)		
46	999547	Earth cable (P.C.B.)		
47	569711	Nylon bush (10mm - 20 pcs)		
48	65101255	Printed circuit board (CB3-FFI02)		24
49	999245	Pressure gauge		
50	-----	Control panel		11
51	995323	Cable (P.C.B.-terminal board)		
52	-----	Terminal board		11
53	995473	Terminal board		
54	995474	Control panel cover		
55	571548	U-Clip		
56	998517	Gasket (20 pcs)		
57	995325	Cable (power supply)		
58	65100879	Seal (combustion chamber - 10x6)		25
59	573327	"Y" piece (air pressure)		
60	571653	Air pressure switch	BDF	
60	995291	Air pressure switch	ACE	
61	573329	Pressure intake cover		
62	997203	Support plate (air pressure switch)		
63	-----	Sealed chamber		11

PART.	CODE	DESCRIPTION	REF.	NOTE
64	998565	Cover (flue test point)		
65	998636	Gasket (flue test point - 5 pcs)		
66	65101021	Restrictor (flue-exhaust manifold/header)	BDF	
66	65101023	Restrictor (flue-exhaust manifold/header)	ACE	
67	999561	Flue (exhaust manifold / header)		
68	998637	Gasket (flue collar - 5 pcs)		
69	998595	Plug (air intake)		
70	999925	Earth cable (fan)		
71	999548	Cable (sealed chamber)		
72	999135	Panel (insulation - fan)		
73	998566	Fixing clamp (fan)		
74	65100707	Gasket (fan) (5 pcs)		26
75	999489	Fan	ACE	
75	998894	Fan	BDF	
76	999554	Panel (insulation - rear)	BDF	
76	998640	Panel (insulation - rear)	ACE	
77	995893	Panel (combustion chamber - L.H. side)	ACE	
77	995922	Panel (combustion chamber - L.H. side)	BDF	
78	998639	Panel (insulation - side)		
79	998620	Main exchanger	ACE	
79	998893	Main exchanger	BDF	
80	999538	Overheat thermostat (100° - 80°C)		
81	998583	Fixing spring (overheat therm.) (5 pcs)		
82	571565	Fixing spring (pressure gauge) (10 pcs)		
83	998589	By-pass pipe		
84	998064	Spring (by-pass pipe) (10 pcs)		
85	996158	Burner 12 ramp (N.G.)	ACE	
85	998887	Burner 14 ramp (N.G.)	BDF	
86	569443	Silicone seal		
87	65100432	Gas pipe		27
88	999988	Cable (gas valve)		
89	573325	Rivet		
90	998433	Burner jet (N.G.) (10 pcs)		
91	572138	Burner jet washer (20 pcs)		
92	998732	Pipe (C.H. return)		
93	997153	U-clip (20 pcs)		
94	996107	Cable (thermostat)		
95	995324	Cable (P.C.B.)		
96	999458	Lever (P.C.B.)		
97	999501	Printed circuit board (CT1)		
98	569720	Blind grommet		
99	950030	Fast fuse 2A (20 pcs)		
100	572860	Terminal board (one-pole) + fuse-holder		
101	65100251	Electrode (Ignition R.H.)		28
102	65100250	Electrode (Ignition L.H.)		29
103	998624	Electrode (Detection)		
104	998147	Ignition electrode cable rubber		
105	995921	Panel (combustion chamber - front)	BDF	
105	65100555	Panel (combustion chamber - front)	ACE	30
106	995892	Panel (combustion chamber - R.H. side)	ACE	
106	995923	Panel (combustion chamber - R.H. side)	BDF	
107	995996	Panel (insulation - front)	BDF	
107	995995	Panel (insulation - front)	ACE	
108	998925	Flue hood	BDF	
108	999385	Flue hood	ACE	
109	999151	Panel (combustion chamber - front)		
110	998075	Sight glass		
111	998076	Gasket (sight glass)		
201	65100852	Inter ignition blade		12
301	998477	Case panel (L.H. side)		
302	991944	Front panel crossbar		
303	998476	Case panel (R.H. side)		
304	995305	Washer (20 pcs)		
305	998442	Case panel (front)		

ER2003210034901011

PART.	CODE	DESCRIPTION	REF.	NOTE
711	998716	Natural gas burner jet full kit (15 pcs)		12
712	998717	Burner jet (full kit - L.P.G.) (15 pcs)		12

NOTE	DESCRIPTION
11	Not supplied as a spare part
12	Not illustrated
21	Replaces code 990492 - from serial number: 2320312200001 - production improvement
22	Replaces code 999987 - unification of replacement parts
23	Replaces codes 990854 and 999085 - unification of replacement parts
24	Replaces code 999499 - unification of replacement parts
25	Replaces code 998516 - unification of replacement parts
26	Replaces code 995349 - unification of replacement parts
27	Replaces code 998729 - from serial number: 2320312500001 - production improvement
28	Replaces code 998623 - from serial number: 2320327000001 - production improvement
29	Replaces code 998622 - from serial number: 2320327000001 - production improvement
30	Replaces code 996134 - unification of replacement parts



PART.	CODE	DESCRIPTION	REF.	NOTE
401	998644	O-ring (pump) (10 pcs)		
402	998643	Auto Air Vent		
403	998738	Gasket (pump head)		
404	996615	Kit (motor pump)		